

Reach truck 1.4 - 2.5 ton

BT reflex

R & E-series

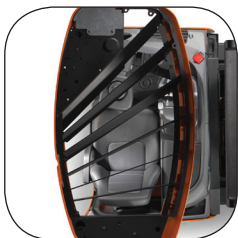
RRE140H/HE

RRE160H/HE

RRE180H/HE

RRE200H/HE

RRE250H/HE



TOYOTA

MATERIAL HANDLING

Reach truck

Identification	1.1	Manufacturer			Toyota	Toyota	Toyota	Toyota	Toyota	
	1.2	Model			RRE140H/HE	RRE160H/HE	RRE180H/HE	RRE200H/HE	RRE250H/HE	
	1.3	Drive			Electric	Electric	Electric	Electric	Electric	
	1.4	Operator type			Seated	Seated	Seated	Seated	Seated	
	1.5	Load capacity/rated load	Q	kg	1400	1600	1800	2000	2500	
	1.6	Load centre	c	mm	600	600	600	600	600	
	1.8	Load distance, centre of support arm wheel to face of fork	x	mm	310 *	394 *	373 *	433 *	388 *	
	1.9	Wheelbase	y	mm	1311	1395	1455	1515	1575	
	Weight	2.1	Service weight including battery			kg	3390	3398	3908	4091
2.3		Axle load, mast retracted without load, drive/support arm wheel			kg	2067/1323	2123/1274	2357/1551	2510/1581	2702/1912
2.4		Axle load, mast extended with load, drive/support arm wheel			kg	667/4123	607/4390	717/4991	764/5327	721/6392
2.5		Axle load, mast retracted with load, drive/support arm wheel			kg	1758/3032	1887/3110	2054/3655	2266/3825	2339/4775
Wheels		3.1	Drive/support arm wheel			Vulkollan®/ Vulkollan®	Vulkollan®/ Vulkollan®	Vulkollan®/ Vulkollan®	Vulkollan®/ Vulkollan®	Vulkollan®/ Vulkollan®
	3.2	Wheel size, front		mm	ø 350x140	ø 350x140	ø400x160	ø400x160	ø400x160	
	3.3	Wheel size, rear		mm	ø 300x106	ø 300x106	ø350x106	ø350x106	ø350x106	
	3.5	Wheels, number front/rear (x = driven wheels)			1x/2	1x/2	1x/2	1x/2	1x/2	
	3.7	Track width, rear	b ₁₁	mm	1134	1134	1134	1134	1134	
Dimensions	4.1	Tilt of fork, forward/backward	α/β	deg	-2°/4° *	-2°/4° *	-2°/4° *	-2°/4° *	-2°/4° *	
	4.2	Height, mast lowered	h ₁	mm	2887 *	2887 *	2966 *	2966 *	2936 *	
	4.3	Free lift	h ₂	mm	2403 *	2403 *	2459 *	2459 *	2449 *	
	4.4	Lift	h ₃	mm	6945 *	6945 *	6945 *	6945 *	6945 *	
		Lift height	h ₂₃	mm	7000 *	7000 *	7000 *	7000 *	7000 *	
	4.5	Height, mast extended	h ₄	mm	7540 *	7540 *	7548 *	7548 *	7545 *	
	4.7	Height of overhead guard (cabin)	h ₆	mm	2198	2198	2261	2261	2261	
	4.8	Seat height	h ₇	mm	1136	1136	1198	1198	1198	
	4.10	Height support arms	h ₈	mm	268	268	330	330	330	
	4.15	Height, fork lowered	h ₁₃	mm	55	55	55	55	55	
	4.19	Overall length	l ₁	mm	2413	2413	2494	2494	2599	
	4.20	Length to face of forks	l ₂	mm	1263	1263	1344	1344	1449	
	4.21	Overall width	b ₁	mm	1270	1270	1270	1270	1270	
	4.22	Fork dimensions	s/e/l	mm	40/100/1150 *	40/100/1150 *	40/120/1150 *	40/120/1150 *	45/125/1150 *	
	4.23	Fork carriage ISO 2328, class/type A, B			2A	2A	2A	2A	2A	
	4.24	Fork carriage width	b ₃	mm	819	819	819	819	819	
	4.25	Width over forks	b ₅	mm	252 - 698	252 - 698	272 - 718	272 - 718	277 - 723	
	4.26	Distance between wheel arms/loading surfaces	b ₄	mm	900 *	900 *	900 *	900 *	900 *	
	4.28	Reach distance	l ₄	mm	506 *	590 *	594 *	654 *	609 *	
	4.31	Ground clearance, with load, below mast	m ₁	mm	68	68	68	68	68	
4.32	Ground clearance, center of wheelbase ²⁾	m ₂	mm	74	74	74	74	74		
4.34.1	Aisle width for pallets 1000x1200 crossways	A _{st}	mm	2687	2710	2785	2802	2894		
4.34.2	Aisle width for pallets 800x1200 lengthways	A _{st}	mm	2749	2757	2836	2842	2942		
4.35	Turning radius	W _a	mm	1573	1657	1717	1777	1837		
4.37	Length across support arms	l ₇	mm	1744	1828	1913	1973	2033		
Performance data	5.1	Travel speed, with/without load		km/h	10,3/11 ¹⁾	10/11 ¹⁾	11/11	11/11	11/11	
	5.1	Travel speed, with/without load (High speed version)		km/h	14/14	14/14	14/14	14/14	14/14	
	5.2	Lift speed, with/without load		m/s	0,38/0,68	0,36/0,68	—	—	—	
	5.2	Lift speed, with/without load (High speed version)		m/s	0,50/0,68	0,50/0,68	0,46/0,68	0,43/0,68	0,37/0,64	
	5.3	Lowering speed, with/without load		m/s	0,55/0,59	0,55/0,59	0,55/0,60	0,55/0,60	0,53/0,58	
	5.4	Reach speed, with/without load		m/s	0,20/0,28	0,20/0,28	0,20/0,28	0,20/0,28	0,20/0,28	
	5.8	Max. gradeability, with/without load ³⁾		%	10/15	10/15	10/15	10/15	7/12	
	5.9	Acceleration time with/without load (over 10 m)		s	5,4/4,9	5,5/4,9	4,9/4,4	5,0/4,5	5,4/4,7	
	5.10	Service brake			Electric	Electric	Electric	Electric	Electric	
	Electric motor	6.1	Drive motor rating S2 60 min		kW	7,5	7,5	9,0	9,0	9,0
6.2		Lift motor rating S3 15%		kW	11,0	11,0	—	—	—	
6.2		Lift motor rating S3 15% (High speed version)		kW	15,0	15,0	15,0	15,0	15,0	
6.4		Battery voltage, nominal capacity K _s		V/Ah	48/465 *	48/465 *	48/620 *	48/620 *	48/775 *	
6.5		Battery weight		kg	685 *	685 *	875 *	875 *	1055 *	
6.6		Energy consumption according to VDI cycle		kWh/h	3,4	3,7	3,9	4,7	5,2	
6.7		Turnover output		t/h	56	66	76	84	105	
6.8		Energy consumption at turnover output		kWh/h	3,2	3,3	3,7	4,2	4,7	
Other	8.1	Type of drive control			Variable AC	Variable AC	Variable AC	Variable AC	Variable AC	
	8.4	Sound level at the driver's ear according to EN 12 053		dB(A)	66	66	66	66	66	

1) 11/11 km/h with support wheel brake.

2) 15 mm under studs.

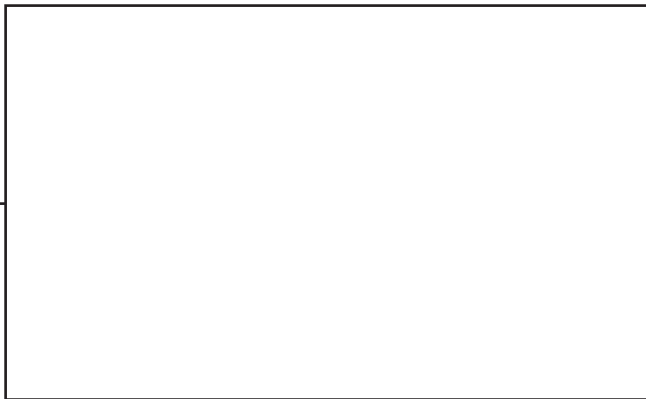
3) Measured according to company standard.

* Other alternatives are available.

All data are based on table configuration. Other configurations may give other values.

Truck performance and dimensions are nominal and subject to tolerances.

Toyota Material Handling Manufacturing Sweden AB products and specifications are subject to change without notice.



TP-Technical Publications, Sweden — 749995-040, version 4, 2017-07-17



TOYOTA

TOYOTA MATERIAL HANDLING, MAINTAINING THE TOYOTA, BT AND RAYMOND MATERIAL HANDLING BRANDS WORLD WIDE

MATERIAL HANDLING